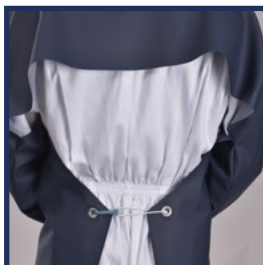


ROMEO WITH SLEEVES

Work clothing



FIELD OF APPLICATION

ROMEO apron resists to standard cleaning products. It is valued for its flexibility.

CLEANING CONDITIONS

Cleaning : wash and brush the apron in hot soapy water (40°C) or in a mixture of water and a gentle detergent. **Rinsing** : with water. Do not use toxic products to clean or rinse the apron. **Storage** : After cleaning, store in a dark, dry, well-ventilated place. The apron must be replaced when it shows signs of wear and tear.

With a proper use and a good maintenance, your apron lasts longer!

MATERIAL

Vinyl on polyester support

FEATURES

- Colours : white and blue
- Thickness : 500 µm (± 10%)
- Weight : 380 g/m² (± 10%)
- Standard dimensions (width x height in cm) :
 - **SMALL** : for people measuring less than 1,70 m
 - **MEDIUM** : for people measuring between 1,70 et 1,85 m
 - **LARGE** : for people measuring more than de 1,85 m

Aprons with stainless steel brass rings and eyelets.

Rear fastening with plastic hook and polyester braided elastic.

Wrist fastening with polyester elastic.

NORMS AND REGULATIONS

Apron in accordance with **Article 33 of the REACH Regulation N°1907/2006** and its amendments on products containing SVHC.

Does not contain phthalate, silicone (and silicone derivatives), or bisphenols